

ASPEN, COLORADO

AL-5889 (FAA)

LOC/DME-E

ASPEN-PITKIN COUNTY/SARDY FIELD (ASE)

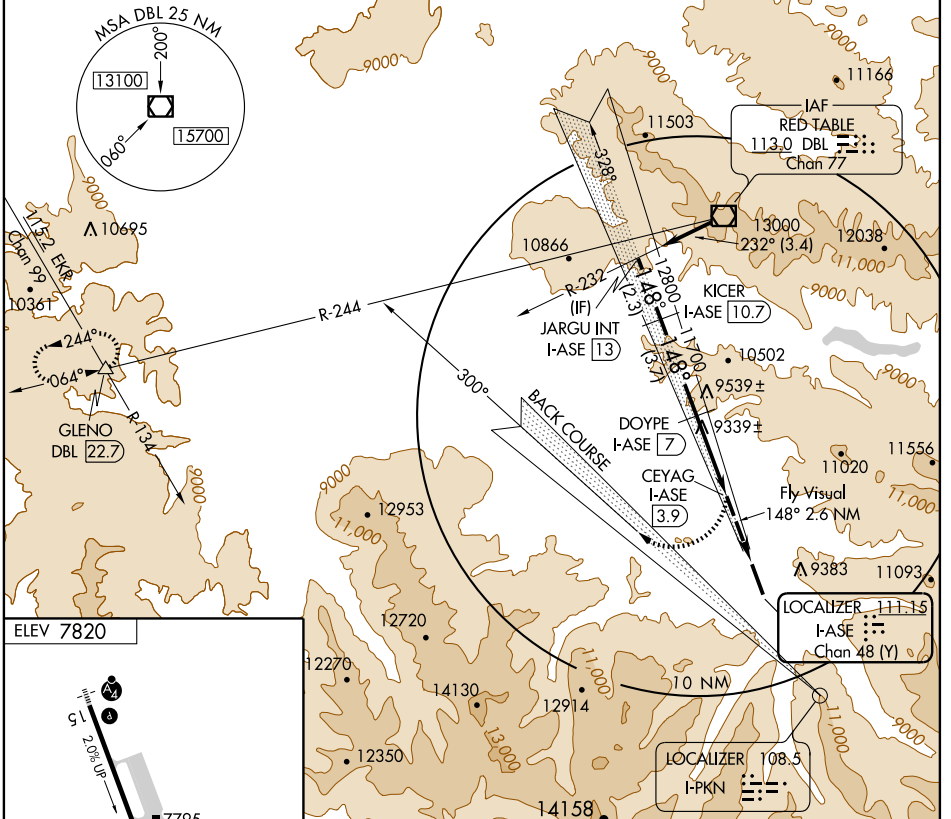
LOC/DME I-ASE 111.15 Chan 48 (Y)	APP CRS 148°	Rwy Idg TDZE Apt Elev N/A N/A 7820
--	------------------------	--

NA Procedure not authorized at night.

MISSED APPROACH: Climbing right turn to 14000 via heading 300° to intercept and proceed via I-PKN northwest course (300°) and DBL VOR/DME R-244 to GLENO INT/DBL 22.7 DME and hold.

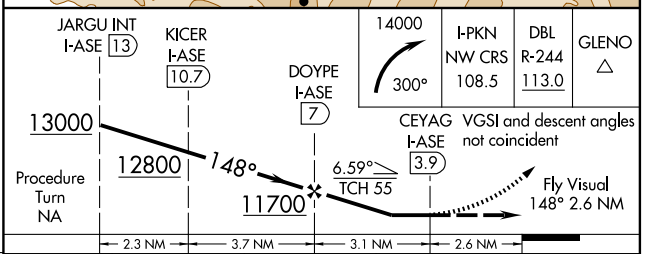
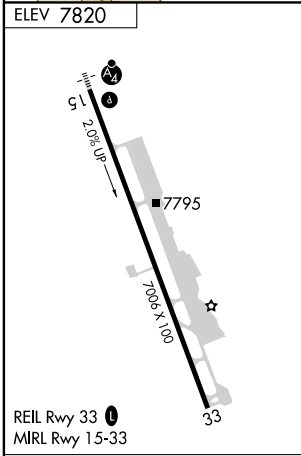
ATIS 120.4	ASPEN APP CON* 123.8 288.3	ASPEN TOWER* 118.85 (CTAF) 288.3	GND CON 121.9	CLNC DEL 123.75	UNICOM 122.95
----------------------	--------------------------------------	--	-------------------------	---------------------------	-------------------------

Procedure NA for arrival on DBL VOR/DME airway radials Q93° CW 297°.



SW-1, 31 JUL 2008 to 28 AUG 2008

SW-1, 31 JUL 2008 to 28 AUG 2008



CATEGORY	A	B	C	D
CIRCLING	9840-3 2020 (2100-3)	9940-3 2120 (2200-3)	10140-3 2320 (2400-3)	NA

ASPEN, COLORADO
Orig 06103

ASPEN-PITKIN COUNTY/SARDY FIELD (ASE)
39°13'N-106°52'W
LOC/DME-E